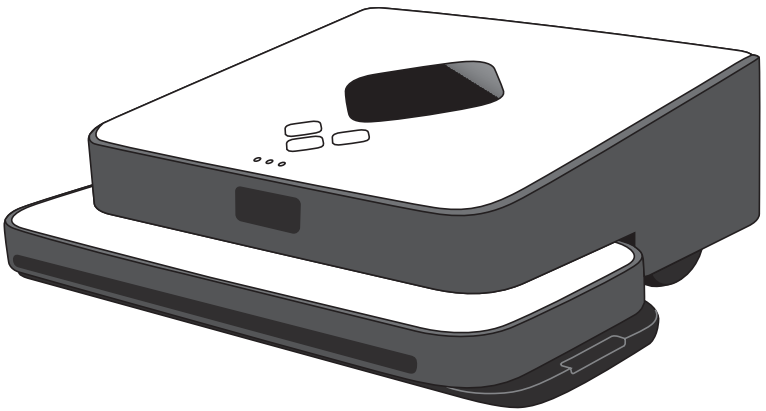


iRobot®

Braava®

Mopping Robot 300 Series Quick Start Guide



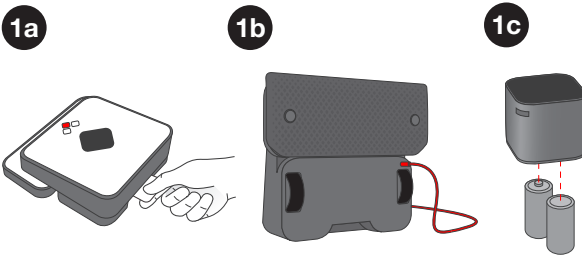
global.irobot.com

Prep Braava

- 1a. Pull out the red rubber insert below Braava's handle.

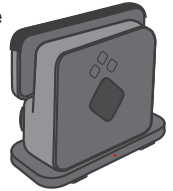
- 1b. Stand Braava on its end to plug the adapter into the charging port. Charge Braava overnight or until the power button light flashes blue.

- 1c. Install the included C batteries in the Cube.



Turbo Charge Cradle (ships with select models)

Plug the adapter into a standard electrical outlet and plug the other end of the cord into the power Jack on the Cradle. Place Braava on the Cradle to charge. Charge Braava for approximately 2 hours or until a flashing blue light appears on Braava's power button.

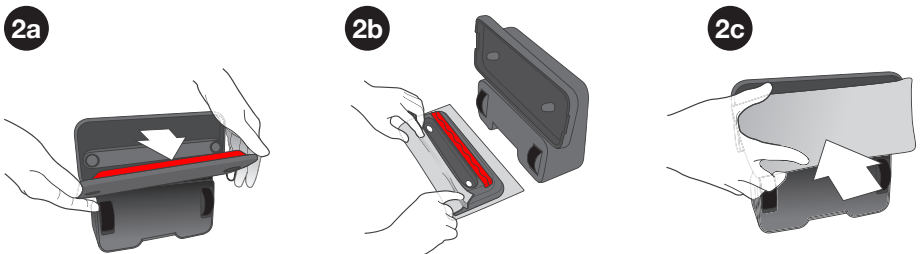


Attach Cleaning Cloth

- 2a. Remove the cleaning pad.

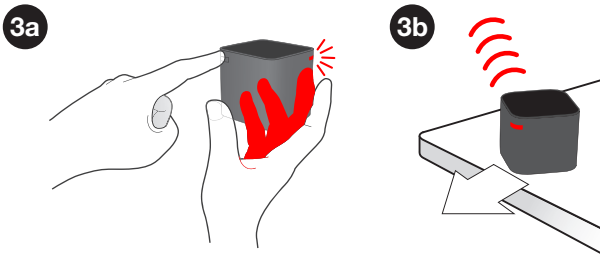
- 2b. Attach your cleaning cloth, tucking the edges into the blue strips.

- 2c. Snap the cleaning pad back on. Magnets will help guide and hold it in place.








Place Cube

- 3a. Turn the Cube on. A flashing blue light will appear.
-
- 3b. Place Cube on a counter or table with a clear view of the ceiling. Point the blinking blue light toward the center of the room.



Clean!

- 4a. Place Braava on the floor near the Cube and press the  power button.
-
- 4b. Push the  button if sweeping with a dry cloth. Push the  button if mopping with a wet cloth.
-
- 4c. Braava's blue lights  will go solid once Braava locks on to the Cube's signal. This may take a few minutes.
-
- 4d. When finished cleaning, Braava plays a song and returns to where it started. To turn Braava off, push and hold the  power button.
Pause cleaning by pressing any button or picking up Braava.
-

Refer to owner's manual for more detailed instructions and product information.

Get Robot Updates

Register your Robot! Go to global.irobot.com

iRobot Customer Care USA & Canada

If you have questions or comments about this product please contact iRobot before contacting a retailer.

Please visit the iRobot home support site at www.irobot.com/support for support tips, frequently asked questions, or information about accessories and other iRobot products.

Should you still need assistance:

Call our Customer Care team at **877.855.8593**.

iRobot Customer Care Hours:

- Monday – Friday 9AM – 7PM Eastern Time
- Saturday 9AM – 6PM Eastern Time

iRobot Customer Care Outside USA & Canada

Visit global.irobot.com to:

- Learn hints and tips to improve the performance of your robot
- Get answers to questions
- Download a detailed product manual
- Contact your local distributor



© 2013–2017 iRobot Corporation, 8 Crosby Drive, Bedford, MA 01730 USA | All rights reserved. iRobot and NorthStar are registered trademarks of iRobot Corporation. Braava is a trademark of iRobot Corporation.

U.S. Pat. <http://www.irobot.com/patents> | Other Patents Pending. WC: 4492297